

Installation Instructions



TRILUTION® LH V4.0

This document describes the installation procedures for TRILUTION® LH Software. Additional documentation is supplied on the Gilson Software USB.

TABLE OF CONTENTS

| | |
|-----------------------------|----|
| Prepare for Installation | 2 |
| Installation Overview | 9 |
| Start TRILUTION LH | 12 |
| Register TRILUTION LH | 15 |
| TRILUTION LH Backup Utility | 19 |
| Installation Qualification | 21 |
| Gilson Server Settings | 22 |
| Customer Service | 23 |



Prepare for Installation

Before beginning the TRILUTION LH installation, ensure that the computer name and domain are established. Changing these parameters after installation will result in errors.

An internet connection is required for installation, but after installation/registration, it is recommended to disconnect from the internet. Because the PC is your system controller, any automatic updates may interfere with your running system.



Recommended PC Configuration

| | |
|------------------|---|
| Processor | Quad Core (2.7 GHz) |
| Memory (RAM) | 8.0 GB |
| Hard Drive | 500 GB–1 TB (200 GB available) |
| I/O Ports | One Serial port required for Gilson Server: Native or USB to RS-232 Adapter* Additional Serial ports for GEARS devices: USB to RS-232 Adapter* One Ethernet port USB ports for USB devices |
| Display | Resolution: 1440 x 900 (or greater) Colors: True Color (32-bit) Text Size: 100% |
| Operating System | Microsoft® Windows® 10 Professional (64-bit)** |

* Contact your local Gilson representative for recommended vendors and models.

** Windows 10 must be a clean install. Upgrades from Windows 7 to Windows 10 are not recommended.

Microsoft and Windows are registered trademarks of the Microsoft Corporation in the United States and/or other countries.

Install Microsoft® Windows® Updates

Before installing Gilson software, install all Windows updates. Failure to do so may result in a failed installation.



Set Power & Sleep Options

1. Open **Control Panel** on the PC. Use the search function to locate it, if necessary.
2. Select **Power Options**. If necessary, change **View by:** to **Large icons** (default is **Category View**).

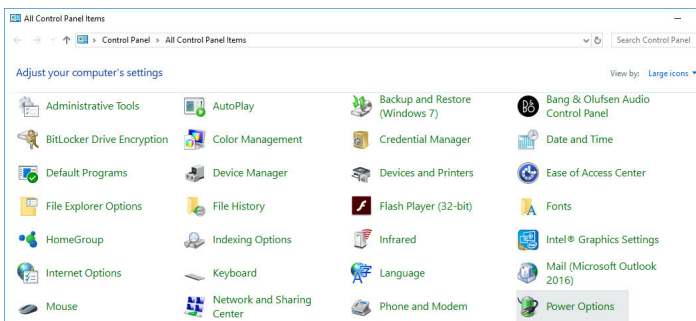


Figure 1
Control Panel - Power Options

3. Select **Change plan settings**.

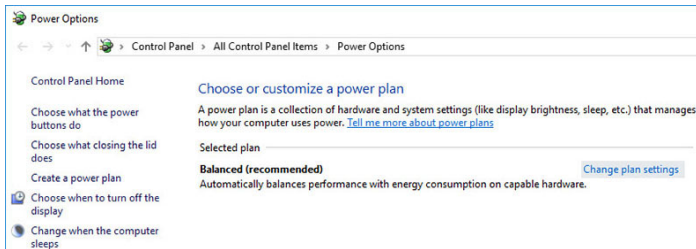


Figure 2
Power Options - Change Plan Settings



4. Set the Sleep options to **Never** and then select **Change advanced power settings**.

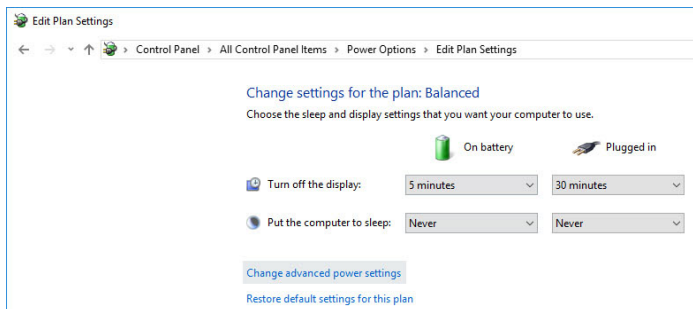


Figure 3

Set Sleep Options to Never

5. In the **Power Options - Advanced settings**:
 - a. Set the **USB selective suspend** setting to **Disabled**.
 - b. Set the **Turn off hard disk** after setting to **Never**.

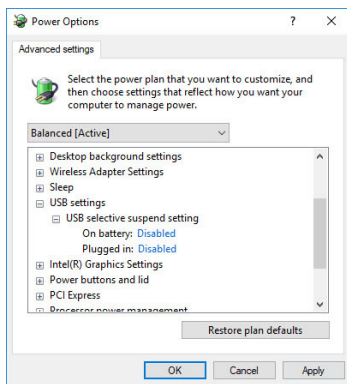


Figure 4

Set USB Selective Suspend Setting to Disabled

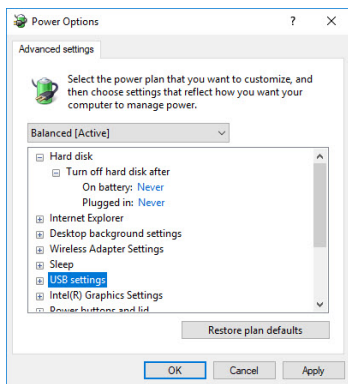


Figure 5

Set Turn off hard disk after Setting to Never



Log On as System Administrator

Installation of TRILUTION LH requires that the installer have local System Administrator privileges.

To check if you are a member of the Administrators Group:

1. Open **Computer Management** on the PC. Use the search function to locate it, if necessary.
2. On the left pane of the **Computer Management** window, double-click on **Local Users and Groups** and then select **Groups**.
3. In the right pane, double-click on **Administrators**. The Administrators Properties window lists the members of the Administrators group.

If you are not a member of this group, contact your IT professional.

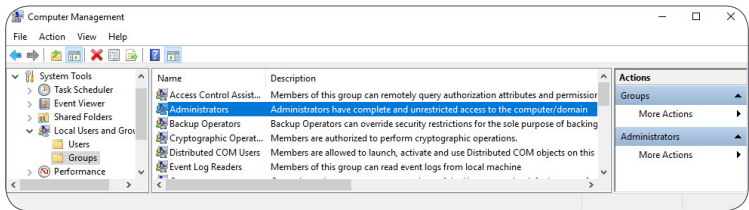


Figure 6
Computer Management

Close All Running Applications

Before installing, ensure that all running applications are closed.



Set Region & Language Options

During the installation, Regional Settings must match the operating system language.

To set region and language options:

1. Open **Region & language** options on the PC. Use the search function to locate it, if necessary.
2. In the **Region & language** window, verify that the settings are for the same language and country as the operating system.

NOTE

After installation, set the Language to English (United States). This is the required setting for running TRILUTION LH.



Figure 7
Region & language Options



Disable Antivirus Software

It is recommended to temporarily disable the antivirus software during installation.

To temporarily disable your antivirus software, refer to the documentation included with the software.

After installation, make sure to enable the antivirus software.

Disable Firewall

It is recommended to temporarily disable firewalls during installation.

WINDOWS DEFENDER FIREWALL

To temporarily disable the Windows Defender Firewall:

1. Open **Windows Defender Firewall** on the PC. Use the search function to locate it, if necessary.
2. On the left pane of the **Windows Defender Firewall** window, select **Turn Windows Defender Firewall on or off**.
3. Select **Turn off Windows Defender Firewall (not recommended)** under each network location.
4. After installation, make sure to enable the firewall.

OTHER FIREWALL

To temporarily disable your firewall, refer to the documentation included with the software.

After installation, make sure to enable the firewall.



Installation Overview

One USB is used to install TRILUTION LH Software and the additional software that is required. The full installation will take approximately 20 minutes.

NOTE

If at any time during the installation a User Account Control window appears, then click Yes.

The installation proceeds as follows:

1. Insert the Gilson Software USB into the USB port and then follow the instructions in **Start Here.pdf** to navigate to the installation file(s) and start the installation.
2. The installation checks for the **Microsoft .NET Framework** feature on the PC.
 - If the feature is available, the installation will continue.
 - If the feature is not available, the installation will fail immediately. Proceed with the following steps:
 - a. Ensure and/or establish an internet connection.
 - b. Open **Windows Features** on the PC. Use the search function to locate it, if necessary.



- c. Turn on the **.NET Framework 3.5 (includes .NET 2.0 and 3.0)** feature by selecting its check box and then selecting **OK**. The check box will be filled, indicating that only part of the feature is turned on. This is expected and acceptable.

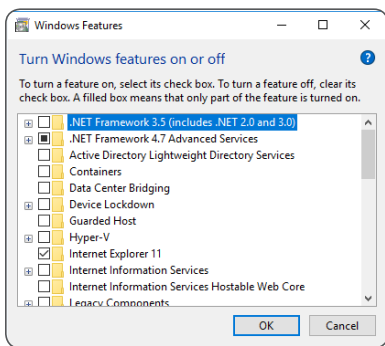


Figure 8
Windows Features

- d. When prompted, select **Download Files from Windows Update**.

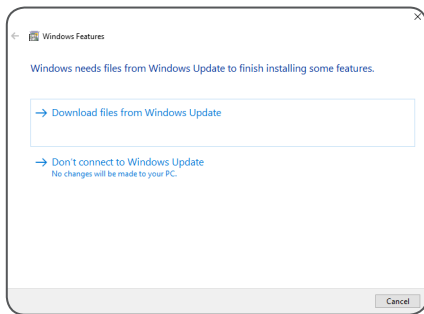


Figure 9
Windows Update

3. Follow the on-screen instructions to install the required pre-requisite items, if not already installed. The InstallShield Wizard will either prompt for action or complete the installation of the required items automatically.

NOTICE

While the installation is running, do not close any windows or boxes that appear. Take no action until you are prompted to.

NOTE

A reboot is required after the installation of some required items. Follow the instructions in step 1 to navigate back to the installation file(s).

4. Follow the on-screen instructions to install TRILUTION LH, which also installs the TRILUTION LH Backup Utility. Reboot the PC when prompted.

NOTE

It is recommended to install to the default location. C:\PROGRAM FILES (x86)\GILSON\TRILUTION LH 4.0.

Property Page Creator Installation (Optional)

To install the Property Page Creator, select **Start** and then select Gilson Applications > Install or Uninstall Property Page Creator.

Follow the on-screen instructions to install Property Page Creator.

NOTE

If at any time during the installation a User Account Control window appears, then click Yes.



Start TRILUTION LH

When starting TRILUTION LH for the first time follow the instructions in this section.

Set Region and Language Options

Before starting TRILUTION LH for the first time, set the **Language** to **English (United States)**. Verify the following:

- The decimal symbol used is a period and not a comma.
- The short date and long date formats are set to month/day/year.

Log On as System Administrator

The first time you start TRILUTION LH, you must have local System Administrator privileges.

Start TRILUTION LH

To start TRILUTION LH, select **Start** and then select **Gilson Applications > TRILUTION LH**.

Alternatively, TRILUTION LH can be started by double-clicking on the TRILUTION LH icon on the desktop. This icon is created automatically during installation.

If any **Windows Security Alerts** appear with Gilson as the Publisher, select **Allow Access**.





Notification of Temporary License and Prompt to Register

A message appears displaying the number of temporary period days remaining. Select **OK** to register TRILUTION LH later or select **Register Now...** to register TRILUTION LH immediately. (If registering immediately, refer to [Register TRILUTION LH](#) on page 15 for more information.)

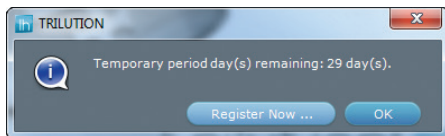


Figure 10
Temporary Period Days Remaining Message



Log In

The TRILUTION LH Log In window appears.



Figure 11
TRILUTION LH Log In Window

TRILUTION LH automatically creates a default user (**Administrator**) who belongs to a default group (**Admin**) during installation. To log in to TRILUTION LH for the first time, enter the following **Username** and **Password** and then select **Log In**.

Username: **Administrator**

Password: **Admin**

The **Username** and **Password** are case sensitive and must be entered exactly. There is a 20 character limit.

You will be prompted to enter a new password for the user. Select **OK** and then enter a new password.

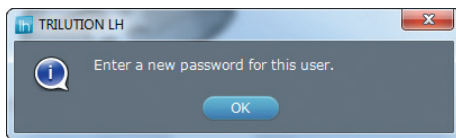


Figure 12
Prompt to Enter New Password



Register TRILUTION LH

TRILUTION LH is installed with a 30-day temporary license. Each installation of TRILUTION LH must be registered with Gilson.

To register TRILUTION LH:

1. Start TRILUTION LH and log in as **Username Administrator** with the appropriate password.
2. On the **Liquid Handling** menu, select **Utilities**.



Figure 13
Liquid Handling Menu



3. On the **Utilities** menu, select **Register**.



Figure 14
Utilities Menu

4. The registration process is explained on the left side of the **TRILUTION LH Registration** window. Review the information.

Figure 15
TRILUTION LH Registration Window



5. Complete all fields. Refer to supplied registration card or contact your local Gilson representative for the serial number.
6. Optionally, select **Review EULA** to review the **End User License Agreement**. Select **OK** to return to the **Registration** window.
7. After all fields have been completed, do one of the following:
 - **Print**
Select **Print** to print the registration information. Use this option if you want to fax your registration information to Gilson.
 - **Save**
Select **Save** to save the registration information to a text file. It is recommended that you use this option if you want to e-mail your registration information to Gilson. The default file name is GILSONREGINFO.TXT and can be saved anywhere you choose.
 - **Clipboard**
Select **Clipboard** to copy the registration information to the clipboard. You will then need to paste the information into another file or an e-mail.



8. Send the registration information generated in step 7 to Gilson. There are two registration options available.
 - **E-mail**
E-mail the registration information to Gilson. The e-mail address is register@gilson.com.
 - **Fax**
Fax the registration information to Gilson.
The fax number is (1) 608-831-4451.
9. After your registration information has been received by Gilson, a license will be generated for your specific PC and returned to you in the form of a license file (called LSERVRC or LSERVRC.TXT).

To update from a temporary to a permanent license, save the LSERVRC file from the e-mail to the TRILUTION LH folder.

The default path on a Windows® 10 system is:

C:\PROGRAM FILES (x86)\GILSON\TRILUTION LH 4.0\CORE.

NOTE

After installation/registration, it is recommended to disconnect from the internet. Because the PC is your system controller, any automatic updates may interfere with your running system.

TRILUTION LH Backup Utility

The TRILUTION LH Backup Utility, installed with TRILUTION LH Software, is used to create backup copies of the database and associated results, which can be restored, if desired.

A clean TRILUTION LH database backup is installed with the software. Run the TRILUTION LH Backup Utility to create additional database backups as desired.

NOTE

The clean database backup (TRILUTION LH Clean Database.lhbackup) is located at C:\ProgramData\Gilson\TRILUTION LH 4.0\Backups.

To start the TRILUTION LH Backup Utility click the **Start** button and then select **Gilson Applications > TRILUTION LH Backup Utility**.

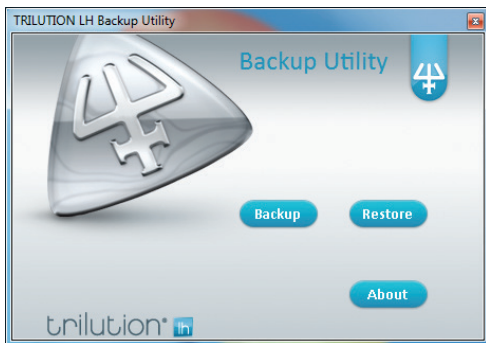


Figure 16
TRILUTION LH Backup Utility Window



Create Backup

1. Close TRILUTION LH and any other programs that may be communicating with the database (GEARS, Property Page Creator, etc.).
2. On the **TRILUTION LH Backup Utility** window, select **Backup**.
3. On the **System Backup Information** window, type a **Name** and a **Description**. Select **Save**.

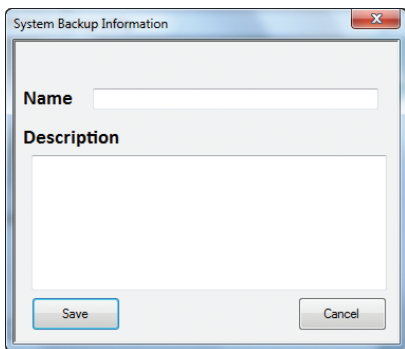


Figure 17
System Backup Information Screen

4. On the **Save Backup File** window, review the folder and then select **Save**.

The backup file is saved in the specified folder with a .LHBACKUP extension. Associated results are zipped and saved in a folder with the database backup name in the specified folder.



Restore Backup

1. Close TRILUTION LH and any other programs that may be communicating with the database (GEARS, Property Page Creator, etc.).
2. On the **TRILUTION LH Backup Utility** window, select **Restore**.
3. On the **Restore Backup File** window, select the backup file (.LHBACKUP) to restore and then select **Open**.

The selected database is restored, replacing the existing database.

Installation Qualification

Complete the TRILUTION LH Installation Qualification supplied on the Gilson Software USB.



Gilson Server Settings

The COM port and baud rate for GSIOC communication can be set through GSIOC Server Settings.

To change the COM port or baud rate:

1. Right-click on the **Server** icon in the task bar and then select **Settings** from the menu.

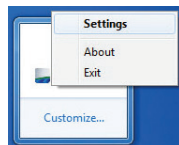


Figure 18
Server in Task Bar

NOTE

Settings cannot be changed if the server is being used by a Gilson program (for example, the GSIOC Utility).

2. From the **Port** drop-down, select the serial communications (COM) port on the PC to which the Gilson interface instrument is connected.
3. From the **Baud** drop-down, select **19200** or **9600** to set the baud. The baud is the rate of data transmission between the PC and the Gilson instrument.

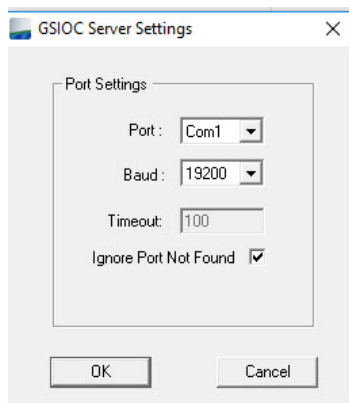


Figure 19
Port and Baud Settings

4. If the check box **Ignore Port Not Found** is not selected and the system does not have a serial port (RS232 port), a message will be displayed stating that a COM port could not be found. Gilson applications are blocked while this message box is open. By default, the **Ignore Port Not Found** check box is selected.
5. Select **OK** to save the changes.



Customer Service

Gilson and its worldwide network of representatives provide customers with the following types of assistance: sales, technical support, applications, and instrument repair.

If you need assistance, please contact your local Gilson representative. Specific contact information can be found at www.gilson.com/ContactUs.

